

IWAKI



MDW
series

Magnetic drive pumps

Magnetic drive fluoroplastic pumps up to 300 m³/h



The MDW series is the largest class of IWAKI's fluoroplastic magnetic drive pumps, offering high efficiency and durability for chemical process applications.



Max. capacity of 300 m³/h & max. head of 98 m IWAKI's largest class fluoroplastic magnetic drive pumps

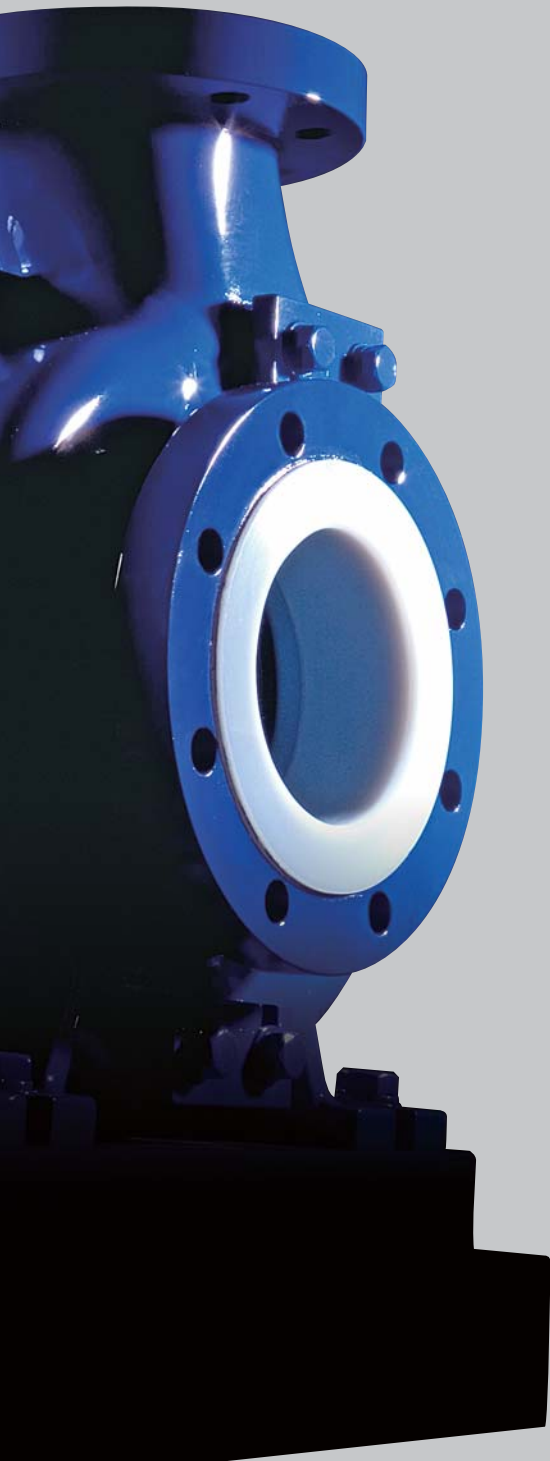
The MDW series is IWAKI's largest class fluoroplastic magnetic drive pumps, offering high efficiency and durability for chemical process applications. Using larger motors for even higher output, the MDW series opens up performance potential in previously unexplored areas.

Application example

- *Chemical transfer between supply tanks and through chemical process equipment*
- *Chemical recirculation for filtration and heat exchange applications*
- *Scrubber liquid recirculation*
- *Replacements for conventional sealed pumps*



MDW100



High discharge capacity, High head and high efficiency

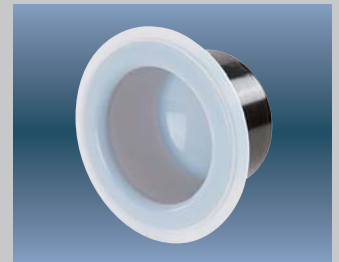
The heavy-duty MDW is capable of a maximum discharge capacity of 300m³/h and max. discharge head of 98 m, enabling applications in previously unexplored areas with a wide range of liquid specific gravities.

Highly chemically resistant

Fluoroplastic and fine ceramic wetted parts offer high resistance to virtually every industrial chemical, irrespective of concentration.

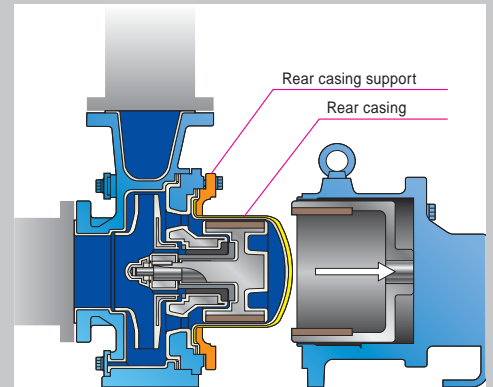
Robust structure

Use of the high strength ductile cast iron external armour is mandatory for heavy duty chemical process applications. High casing pressure resistance is achieved with a unique rear casing design preventing stress concentration and incorporating a triple-layer structure (PAT). A special metal shaft is used on the MDW to withstand high radial forces and allow continuous extended operation even under harsh service conditions.



Back pullout system

The back pullout system allows easy maintenance and inspection without removing pipework. Integrated components and a sealed rear casing support structure enable motor removal safely without chemical leakage.

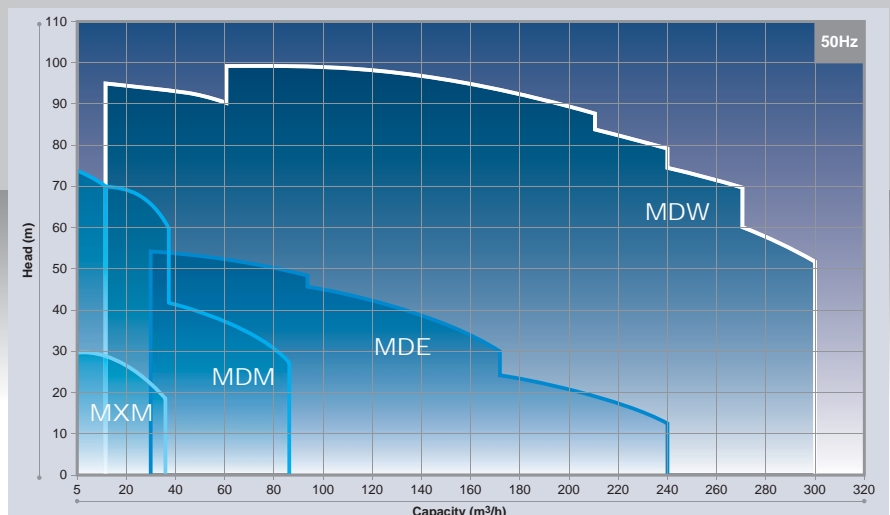


ISO compliant

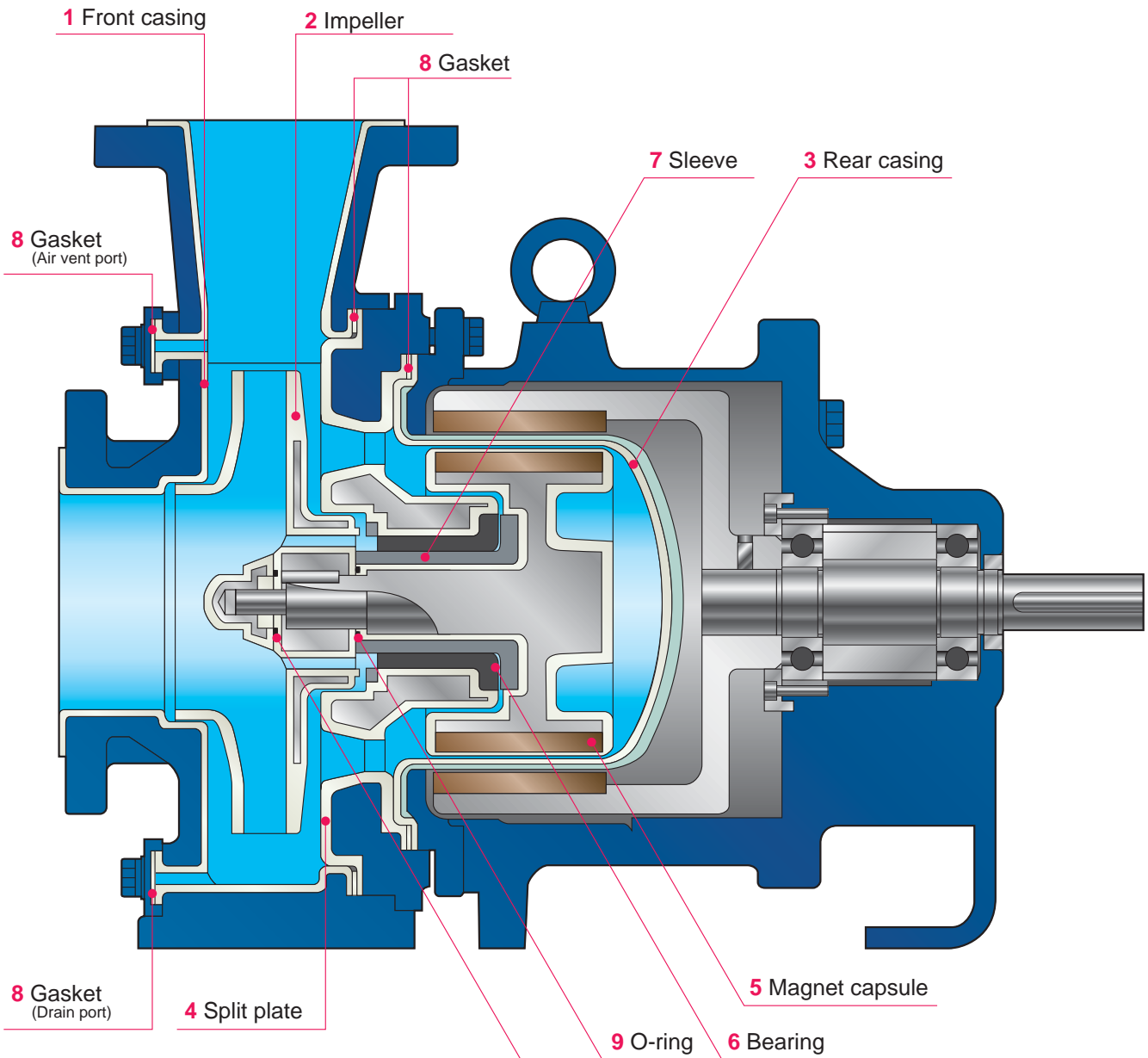
The MDW is dimensionally compliant with the international standard (ISO2858, 3661) and is interchangeable with conventional sealed centrifugal pumps.

Performance curves

(Flow range of IWAKI Magnetic drive process pumps)



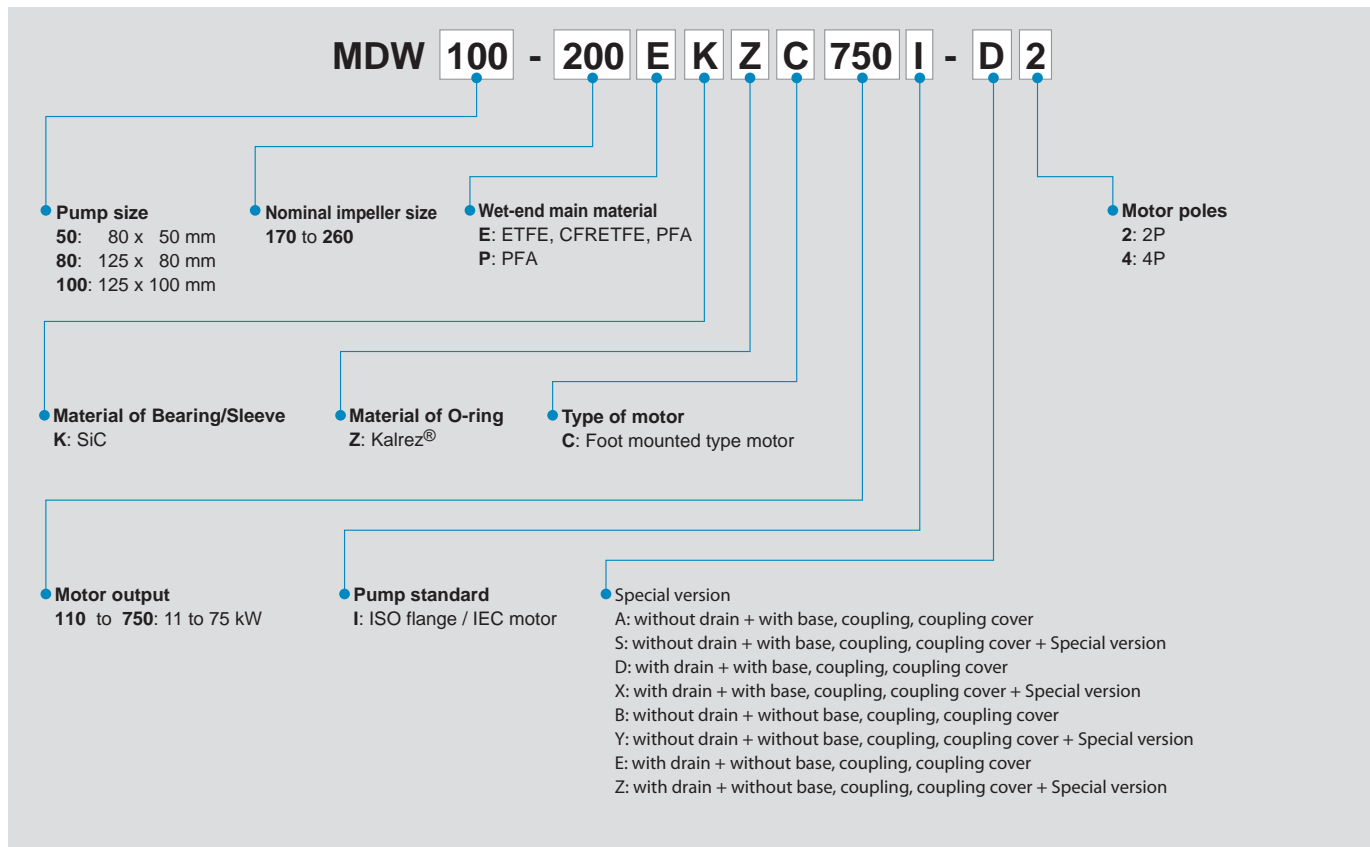
Construction



Wet-end materials

Part number	Part name	MDW50	MDW80, 100
1	Front casing	PFA	ETFE
2	Impeller	PFA	CFRETFE
3	Rear casing		PFA
4	Split plate		PFA
5	Magnet capsule		PFA
6	Bearing		SiC
7	Sleeve		PTFE
8	Gasket		PTFE
9	O-ring		Kalrez®

Pump identification



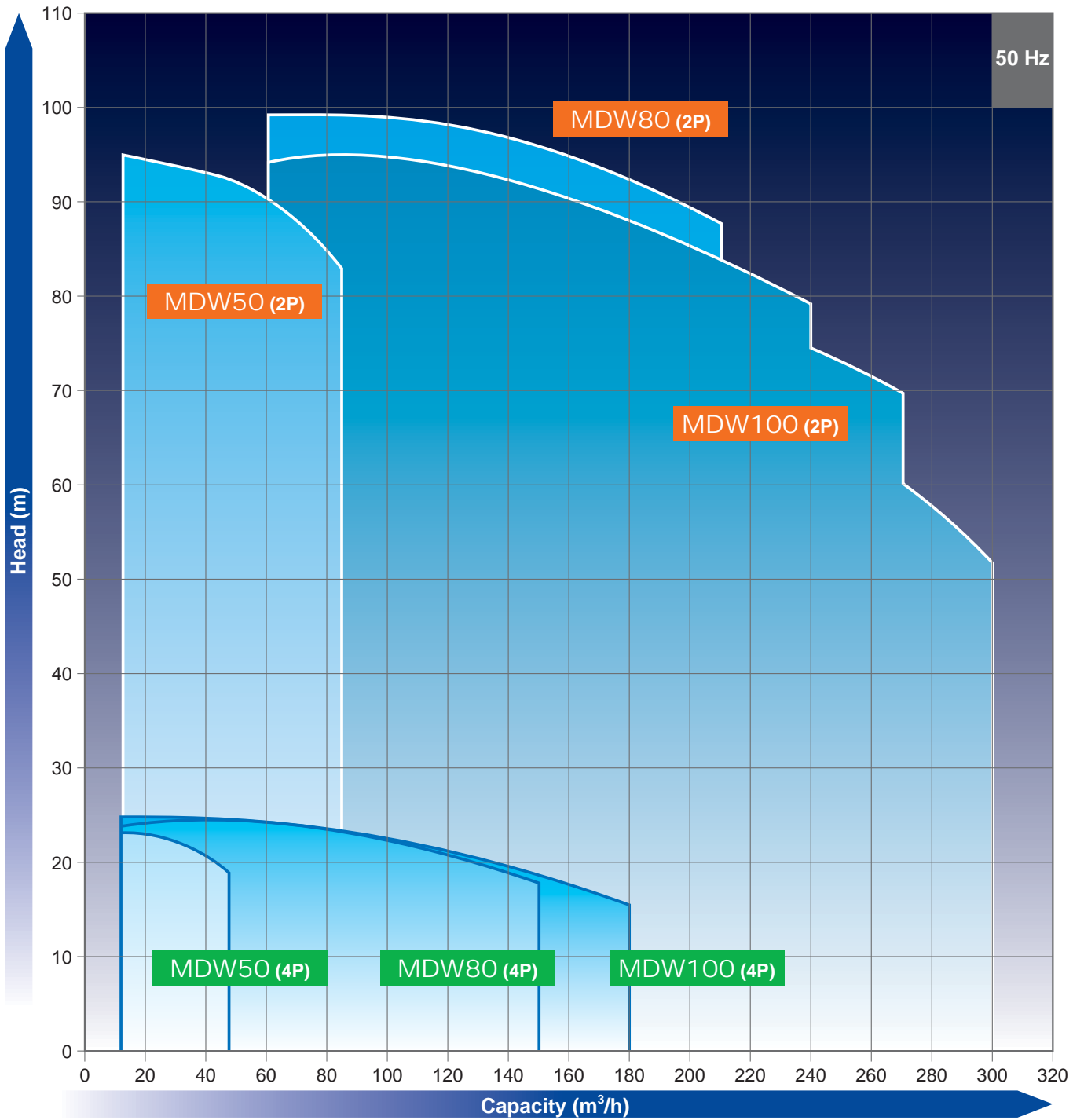
Specification

Model	Pump size Suction x Discharge	Nominal Impeller size	Capacity m ³ /h (l/min)	Head m	Motor kW
MDW50	ø 80 x 50 mm	250	50 (833)	80	2P 22, 30, 37, 45, 55, 75
		260	25 (417)	21	4P 11, 15, 18.5, 22, 30, 37
MDW80	ø 125 x 80 mm	250	160 (2667)	80	2P 37, 45, 55, 75
		255	80 (1333)	23	4P 11, 15, 18.5, 22, 30, 37
MDW100	ø 125 x 100 mm	200	200 (3333)	50	2P 37, 45, 55, 75
		235	100 (1667)	21	4P 11, 15, 18.5, 22, 30, 37

Common specification

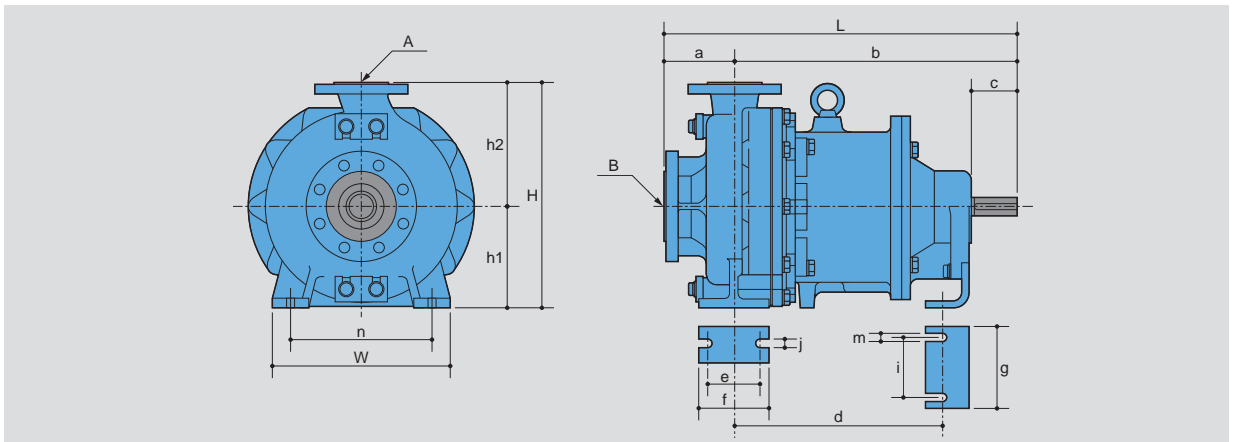
Liquid temperature range:	MDW80/100: -10 to 105°C	MDW50: -10 to 120°C
Maximum operating pressure	1.6 MPa	
Motor	Foot mounted type motor	

Performance curves (50Hz)

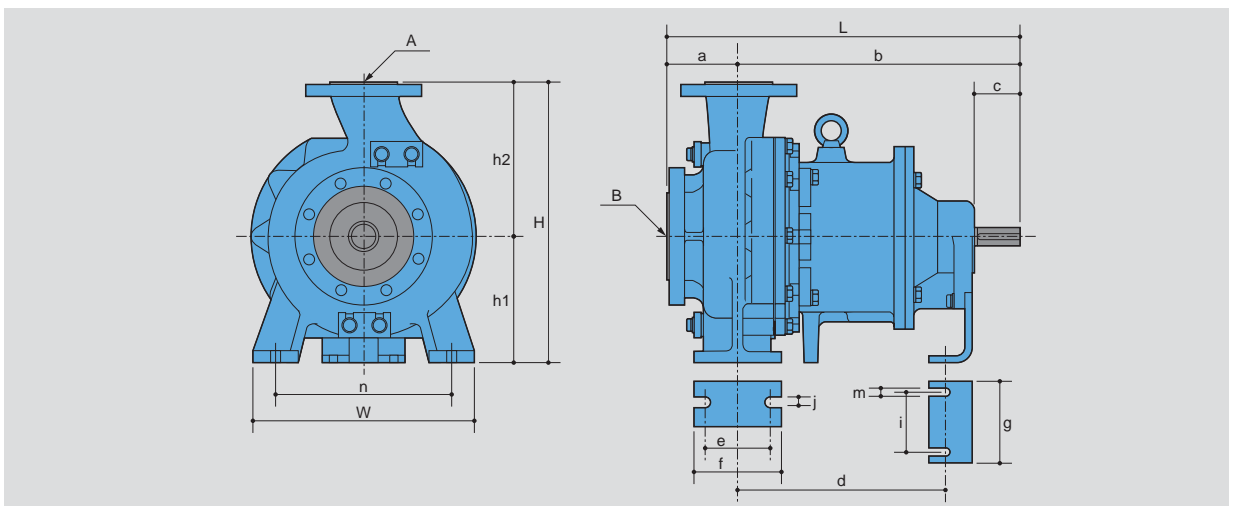


Dimension (mm)

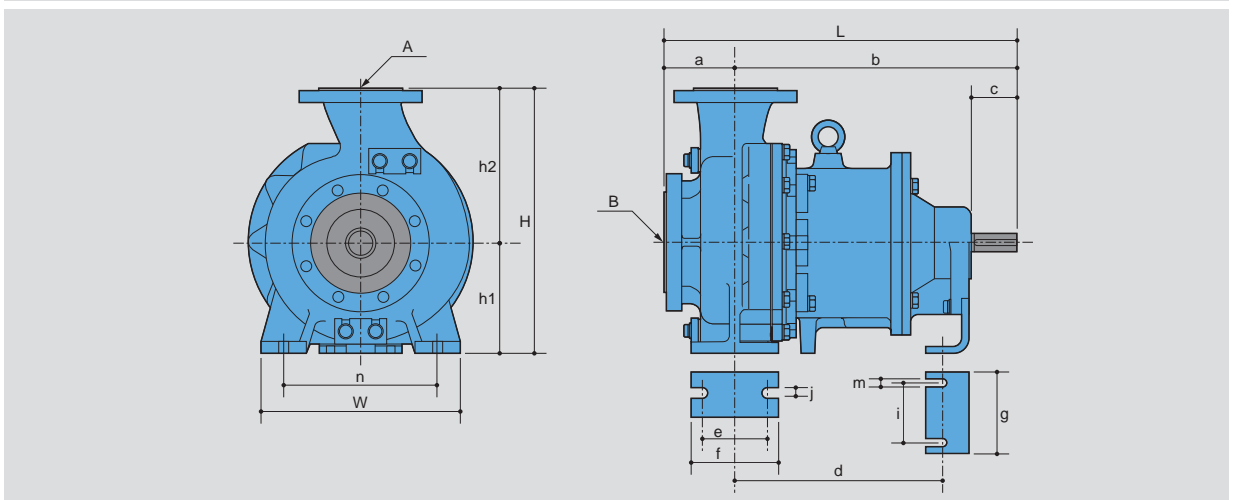
MDW50



MDW80



MDW100



	W	H	L	A	B	a	b	c	d	e	f	g	h1	h2	i	j	n	m
MDW50	320	(405)	(625)	50 mm Ø	80 mm Ø	125	500	80	370	95	125	150	180	225	110	14	250	14
MDW80	400	(505)	(625)	80 mm Ø	125 mm Ø	125	500	80	370	120	160	150	225	280	110	18	315	14
MDW100	360	(480)	(625)	100 mm Ø	125 mm Ø	125	500	80	370	120	160	150	200	280	110	18	280	14

IWAKI Process magnetic drive pump series

MDE SERIES

The most reliable, large-sized magnetic drive pump designed for process use

Specifications

- max. discharge capacity: 4.0 m³/min
- max. head: 55 m
- main materials: ETFE, PFA, SiC
- liquid temp. range: 0 to 100°C

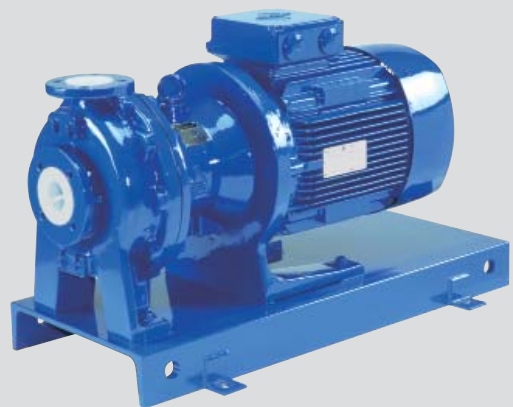


MDM SERIES

Magnetic drive process pumps with dry running capability

Specifications

- max. discharge capacity: 1.4 m³/min
- max. head: 74 m
- main materials: CFRETFE / PFA
- liquid temp. range: CFRETFE: -20 to 105°C
PFA: -20 to 150°C



MXM SERIES

Magnetic drive pumps with an excellent balance of features and performance

Specifications

- max. discharge capacity: 600 l/min
- max. head: 29 m
- main materials: CFRETFE
- liquid temp. range: -10 to 105°C



www.iwakipumps.jp

IWAKI CO.,LTD. 6-6 Kanda-Sudacho 2-chome Chiyoda-ku Tokyo 101-8558 Japan Tel.: +81 3 3254 2935 Fax: 3 3252 8892

EUROPE / USA

	Phone	Fax
European office:	+49 2154 9254 0	2154 9254 48
Austria:	+41 26 674 93 00	26 674 93 02
Belgium:	+32 13 67 02 00	13 67 20 30
Denmark:	+45 48 24 2345	48 24 2346
Finland:	+358 9 2745810	9 2742715
France:	+33 1 69 63 33 70	1 64 49 92 73
Germany:	+49 2154 9254 50	2154 9254 55
Holland:	+31 297 241121	297 273902
Italy:	+39 02 990 3931	02 990 42888
Norway:	+47 66 81 16 60	66 81 16 61
Spain:	+34 943 630030	943 628799
Sweden:	+46 8 511 72900	8 511 72922
Swiss:	+41 26 674 93 00	26 674 93 02
UK:	+44 1743 231363	1743 366507
USA:	+1 508 429 1440	508 429 1386

ASIA / OCEANIA

	Phone	Fax
Australia:	+61 2 9899 2411	2 9899 2421
China:		
Hong Kong:	+852 2607 1168	2607 1000
Shanghai:	+86 21 6272 7502	21 6272 6929
Guangzhou:	+86 20 8435 0603	20 8435 9181
Beijing:	+86 10 6442 7713	10 6442 7712
Korea:	+82 2 2630 4800	2 2630 4801
Malaysia:	+60 3 7803 8807	3 7803 4800
Singapore:	+65 6316 2028	6316 3221
Indonesia:	+62 21 6906606	21 6906612
Taiwan:	+886 2 8227 6900	2 8227 6818
Thailand:	+66 2 322 2471	2 322 2477
Vietnam:	+84 613 933456	613 933399

! Caution for safety use: Before use of pump, read instruction manual carefully to use the product correctly.
Actual pumps may differ from the photos. Specifications and dimensions are subject to change without prior notice. For further details please contact us.

! Legal attention related to export.
Our products and/or parts of products fall in the category of goods contained in the Export Trade Control Order Attachment List 1 of Japanese export control regulations, which includes complementary export control items. Please be reminded that export license, which is issued by the Ministry of Economy, Trade, and Industry in Japan could be required when products are exported from Japan.

